



Nest Boxes for Wood Ducks



Materials

Nails 25 - 8 or 10 penny, zinc coated.

Spike 1-4+ inch.

Lag Bolt 1--1/4 inch, 6 inches long.

Hinge 3-inch cabinet + screws.

Hardware Cloth 18 - inch strip cut at least 3 inches wide. (All sharp ends should be bent under.)

Post 1, 4"X4", 16 feet long. (Should be cypress, cedar, or a preservative-treated wood.)

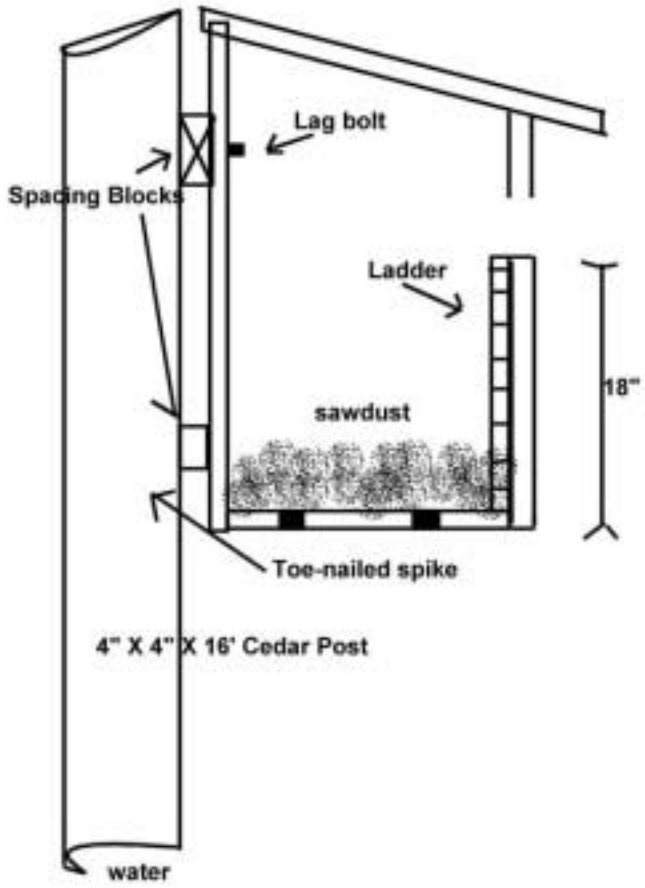
Plus Enough sawdust, wood-chips, or crumbled rotten wood to form a 3-inch nest base in each box.

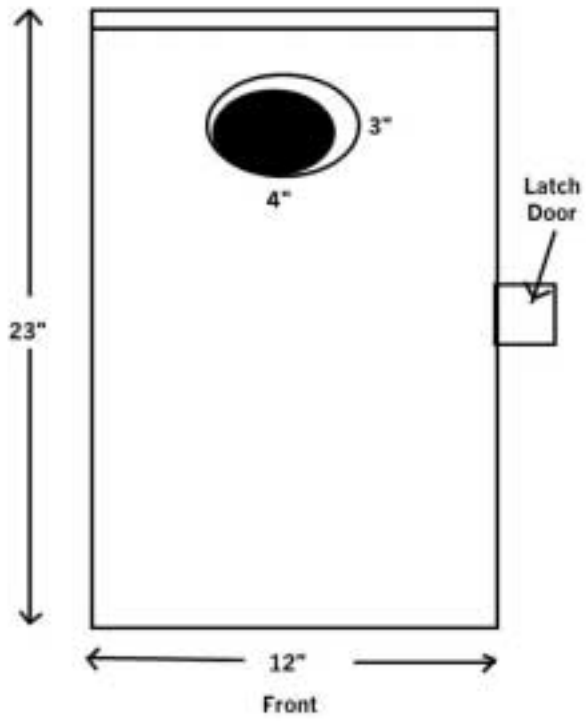
Four 1/4" drain holes in floor of box.

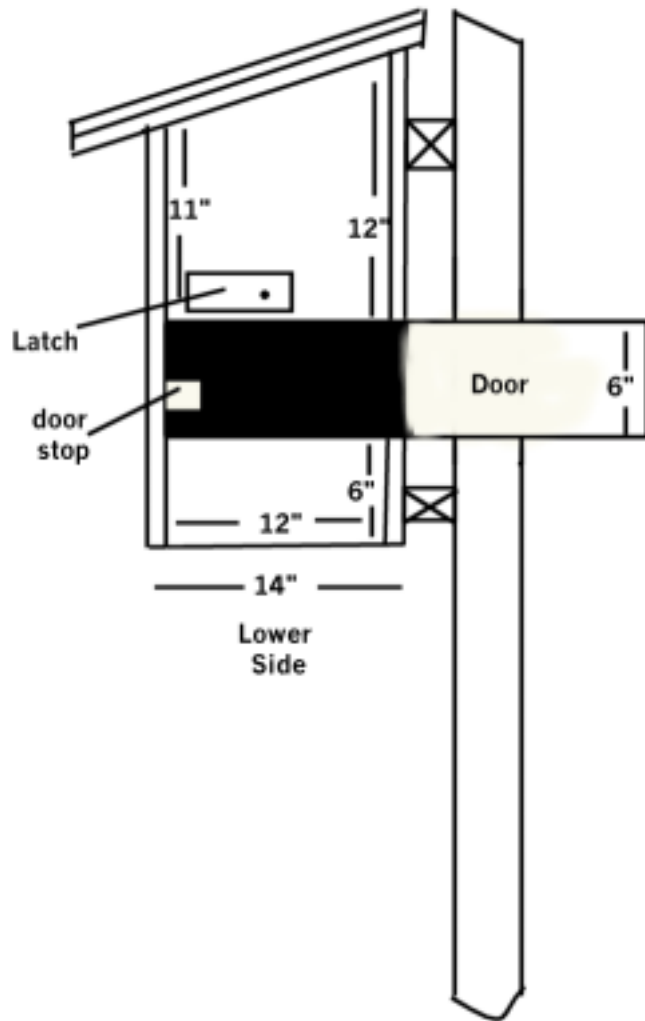
Mesh hardware cloth from the bottom to the hole will help ducklings climb out.

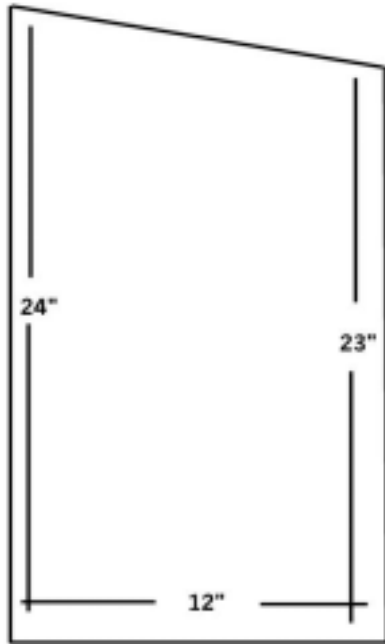
Grouped boxes will provide the best results.

Clean sawdust or woodchips every January

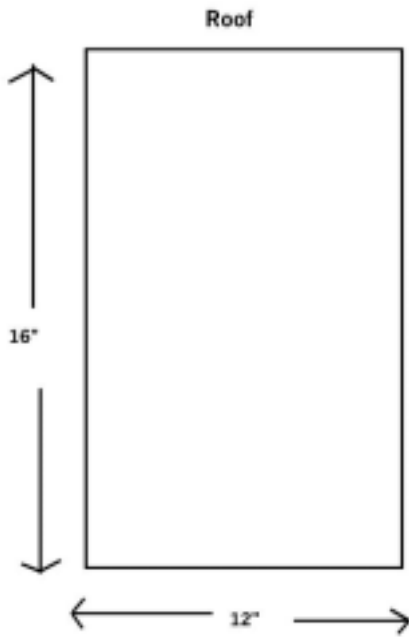


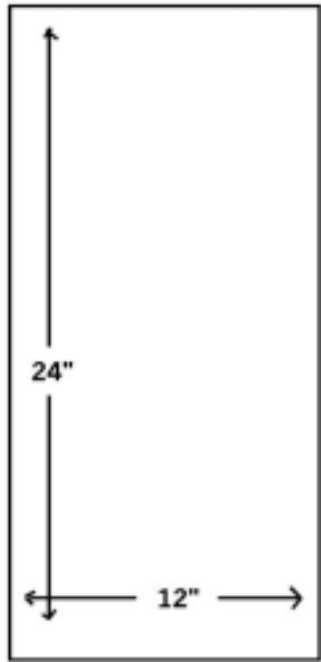






Side #1





Back

