

Access & Habitat Program



Oregon Fish and Wildlife Commission

Tigard, OR

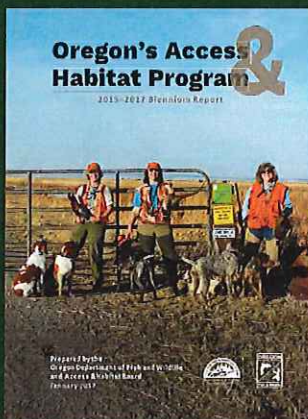
February 10, 2017



Isaac Sanders
A&H Coordinator



A & H 2015-2017 Biennium Report



Total income \$2,629,904

\$4 surcharge \$1,672,417

Auction \$625,455

Raffle \$294,666

Green Forage \$19,187

DEAR \$18,179

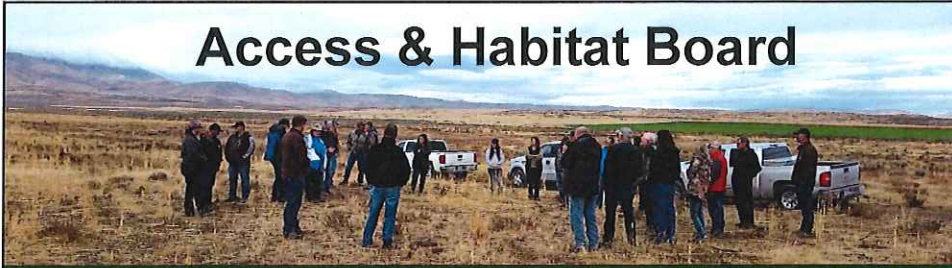
Total spending \$2,348,005

Project grants \$2,043,081

Administration \$306,924

Projected reserve account balance \$1,038,000

Access & Habitat Board



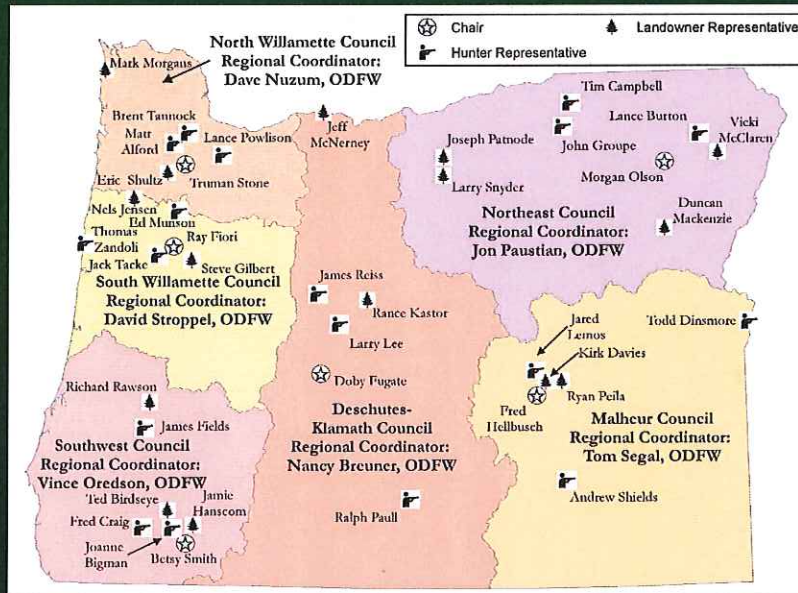
Appointed by Commission to provide recommendations for expenditure of A&H funds

- All volunteer board
- 3 landowner representatives
- 3 hunter representatives
- Chair

Appointees serve 4 year term, eligible for second term

Currently recruiting to fill landowner representative vacancy

Regional Councils



Enhanced Law Enforcement Patrols

Enhanced Patrols

- 7 projects maintain access to 3.5 million acres
- Average cost less than \$0.20/acre
- Majority of projects contract with Oregon State Police



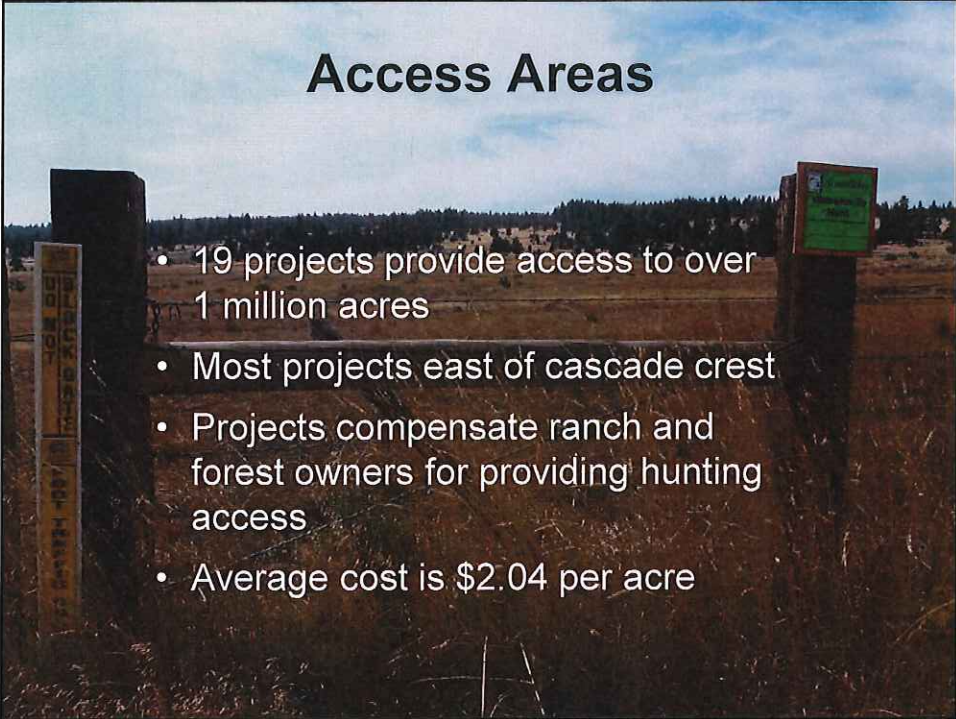
Lincoln County Forest Deputy

- Started 1993 by landowners, solid waste district and Lincoln Co.
- Majority funded by landowners, county and waste management with A&H providing 20% of funding (\$30,000/yr.)

Linn County Forest Deputy

- Started in 1997 by landowners, Linn County Sheriffs Office
- Landowners fund majority of project cost, A&H provides 11% of project funding (\$12,000/yr.)

Access Areas

- 
- A photograph of a rural landscape with a fence line. In the foreground, there are wooden posts and a sign. The background shows a field and a line of trees under a cloudy sky.
- 19 projects provide access to over 1 million acres
 - Most projects east of cascade crest
 - Projects compensate ranch and forest owners for providing hunting access
 - Average cost is \$2.04 per acre

Habitat Projects



- Over 40,000 acres of habitat work
- More work funded for this spring
- Typical projects include; Juniper and noxious weed treatments, water developments, seeding
- Average cost of habitat projects is \$10 per acre



Challenges and Opportunities

Finding balance with project mix

- Access consistently identified as priority
- Habitat projects cost substantially more than providing access



Change in ownership and management of timberlands

- Transition to fee access
- New owners may not be familiar with tradition of public access to timberlands

Identifying Priorities for A&H Funds

Biological; habitat needs of the animals

Social; needs of hunters and landowners

Identify priorities for funding in each of the six regions;

- Biologists identify habitat limiting factors, damage issues and population data
- Regional Council provide local input
- Input from hunters
- A&H Board will summarize priorities



Questions?

